

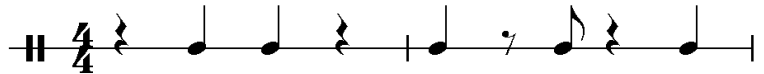
Clave Patterns

The term clave (roughly translated as the word “key”) applies to both the instrument, clave, and a type of rhythmic pattern that serves as the backbone to most Afro-Cuban music. Likewise, the clave has grown to be a fundamental part of many other grooves that the world enjoys. Here are four of the most common presentations of the clave pattern

3-2 Clave (“Clave Son”)



2-3 Clave (“Son Clave”)



Rhumba Clave



6/8 Clave

