

## Major Chord Study #1

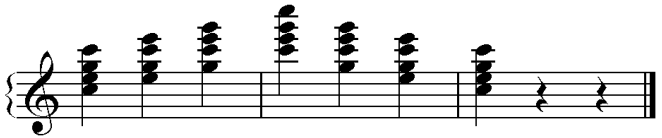
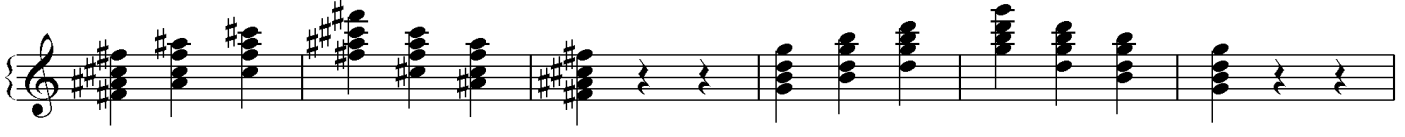
The first section, "Major Chord Study #1", consists of five staves of music in 4/4 time. Each staff contains a sequence of chords. The first staff starts with a C major chord (C4-E4-G4) and moves through various major triads across the staff. The second staff continues this sequence, including chords like F major (F4-A4-C5) and B major (B4-D5-F5). The third staff features chords such as D major (D4-F4-A4) and G major (G4-B4-D5). The fourth staff includes chords like E major (E4-G4-B4) and A major (A4-C5-E5). The fifth staff concludes with chords like F# major (F#4-A4-C5) and G# major (G#4-B4-D5), ending with a final chord and a double bar line.

## Minor Chord Study #1

The second section, "Minor Chord Study #1", also consists of five staves of music in 4/4 time. The first staff begins with a C minor chord (C4-Eb4-G4) and progresses through other minor triads. The second staff includes chords like F minor (F4-Ab4-C5) and B minor (B4-Db5-F5). The third staff features D minor (D4-F4-Ab4) and G minor (G4-Bb4-D5). The fourth staff includes E minor (E4-G4-Bb4) and A minor (A4-C5-Eb5). The fifth staff concludes with chords like F# minor (F#4-Ab4-C5) and G# minor (G#4-Bb4-D5), ending with a final chord and a double bar line.

# Major Chord Study #2

(Chord Inversions)



# Minor Chord Study #2

(Chord Inversions)

